

THE BOARD OF COUNTY COMMISSIONERS, LANE COUNTY, OREGON

RESOLUTION AND ORDER)

94-1-5-7)

FILED

JAN 06 1994

COUNTY CLERK
BY *Sarah Dubois*

) IN THE MATTER OF ACCEPTING
) PLAN/AMENDMENT APPROVAL FORM (PAAF)
) #24 FROM THE STATE OF OREGON MENTAL
) HEALTH AND DEVELOPMENTAL
) DISABILITIES SERVICES DIVISION
) (MHDDSD) IN THE AMOUNT OF \$374,859 IN
) COMMUNITY PROGRAMS FOR PERSONS WITH
) A MENTAL ILLNESS; APPROPRIATING AN
) ADDITIONAL \$114,357 IN FUND 24 IN
) THE DEPARTMENT OF HEALTH AND HUMAN
) SERVICES AND DELEGATING
) AUTHORITY TO THE COUNTY
) ADMINISTRATOR TO SIGN THE PAAF AND
) THE SUBSEQUENT SUBCONTRACT AMENDMENT
) LISTED IN EXHIBIT A ATTACHED

WHEREAS, the Board of County Commissioners has accepted revenues pursuant to the 1993-95 Intergovernmental Agreement #20-001 with the State Mental Health and Developmental Disabilities Services Division; and

WHEREAS, the above mentioned agreement provides for Lane County to provide community mental health services for children and adults; and

WHEREAS, PAAF #24 provides for an increase in community mental health programs for adults;

WHEREAS, the Department of Health and Human Services must use those revenues in fiscal year 1993-94 through its administrative agency, Lane County; and

WHEREAS, the Board of County Commissioners as the governing board of Lane County may, in accordance with Oregon Revised Statute 294.326(2), appropriate by resolution unanticipated revenues and expenditures; it is hereby

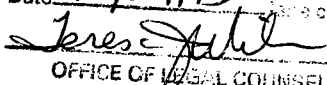
ORDERED that the Board of County Commissioners accept PAAF #24 from the State Mental Health and Developmental Disabilities Services Division in the amount of \$374,859; and

ORDERED that the Board of County Commissioners increase the fiscal year 1993-94 budget for the Department of Health and Human Services by the increase in appropriations in Fund 24 of \$114,357 in revenues and expenditures; and it is further

ORDERED that the Board of County Commissioners delegate authority to the County Administrator to sign PAAF #24 and to sign the subsequent subcontract amendment as listed in Exhibit A attached.

DATED this 5th day of January, 1994.


Jerry Rust, Chair
BOARD OF COUNTY COMMISSIONERS

APPROVED AS TO FORM
Date 12/29/93

OFFICE OF LEGAL COUNSEL

IN THE MATTER OF ACCEPTING PLAN/AMENDMENT APPROVAL FORM (PAAF) #24 FROM THE STATE OF OREGON MENTAL HEALTH AND DEVELOPMENTAL DISABILITIES SERVICES DIVISION (MHDDSD) IN THE AMOUNT OF \$374,859 IN COMMUNITY PROGRAMS FOR PERSONS WITH A MENTAL ILLNESS; APPROPRIATING AN ADDITIONAL \$114,357 IN FUND 24 IN THE DEPARTMENT OF HEALTH AND HUMAN SERVICES AND DELEGATING AUTHORITY TO THE COUNTY ADMINISTRATOR TO SIGN THE PAAF AND THE SUBSEQUENT SUBCONTRACT AMENDMENT LISTED IN EXHIBIT A ATTACHED

DEDICATION OF A PUBLIC ROAD EASEMENT

LANE COUNTY

KNOW ALL MEN BY THESE PRESENTS, that Lane County, a political subdivision of the State of Oregon, is the owner of certain real property, and that Lane County acquired title by that certain Bargain and Sale Deed from Lane County Title Company recorded on Reel 284-D, Recorder's Reception Number 41988, of the Lane County, Oregon, Deed Records, and that said Lane County does hereby dedicate to the free use of the public, for public road purposes, the following described tract of land, to wit:

All of Parcel "D", in the Plat of the Third Addition to Yolanda Park, Book 48, Page 4, Lane County Oregon Plat Records.

It being the intent herein to create a Public Road extension of 17th Place.

Approved this 5th day of January, 1994.

Jerry Rust
Commissioner

Jack Roberts
Commissioner

Steve Cornacchia
Commissioner

Marie Frazier
Commissioner

9428JAN.06*94#08#PFUND 10.00

Commissioner

STATE OF OREGON)
COUNTY OF LANE)ss.

On January 5, 1994, personally appeared the above-named

Jerry Rust, Jack Roberts

Steve Cornacchia, Marie Frazier

County Commissioners of Lane County, Oregon, and acknowledged the foregoing instrument to be their voluntary act before me:

Sharon L. Giles

NOTARY PUBLIC FOR OREGON

My Commission Expires: 5-31-96

ATT: Map



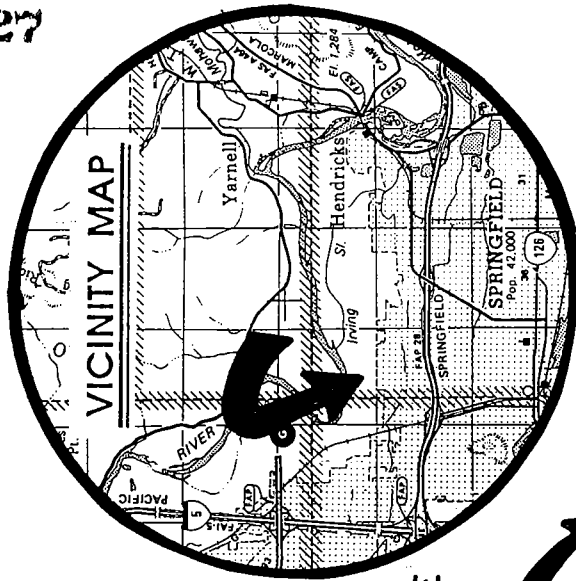
9401127

ATTACHMENT

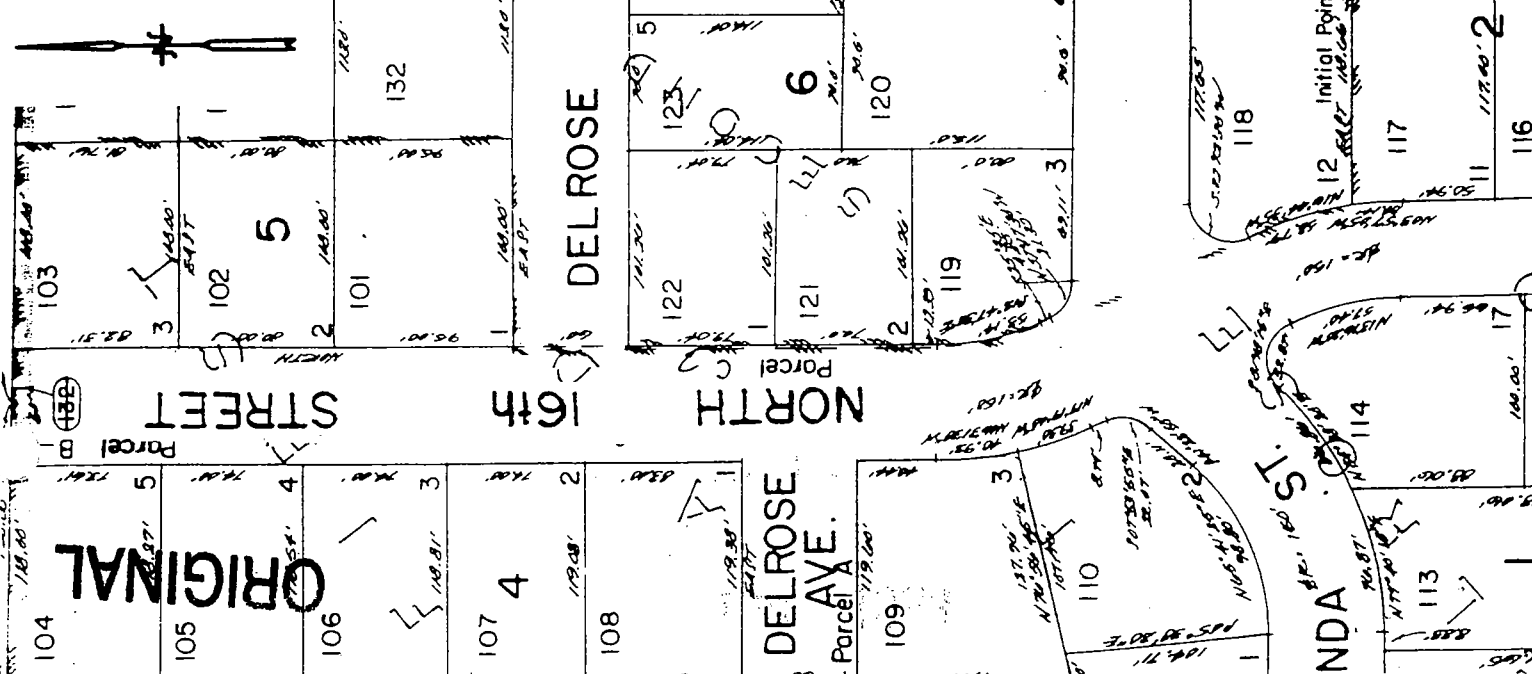
SE 1/4 SW 1/4 Sec. 24 T.17 S. R.3 W.W.M

LANE COUNTY

1" = 100'



PARCEL "D" TO BE RELEASED AND DEDICATED



SECOND

YOLANDA ST.

Parcel

104

105

106

107

108

109

110

111

112

113

114

115

116

117

118

119

120

121

122

123

124

125

126

127

128

129

130

131

132

133

134

135

136

137

138

139

140

141

142

143

144

145

146

147

148

149

150

151

152

153

154

155

156

157

158

159

160

161

162

163

164

165

166

167

168

169

170

171

172

173

174

175

176

177

178

179

180

181

182

183

184

185

186

187

188

189

190

191

192

193

194

195

196

197

198

199

200

201

202

203

204

205

206

207

208

209

210

211

212

213

214

215

216

217

218

219

220

221

222

223

224

225

226

227

228

229

230

231

232

233

234

235

236

237

238

239

240

241

242

243

244

245

246

247

248

249

250

251

252

253

254

255

256

257

258

259

260

261

262

263

264

265

266

267

268

269

270

271

272

273

274

275

276

277

278

279

280

281

282

283

284

285

286

287

288

289

290

291

292

293

294